



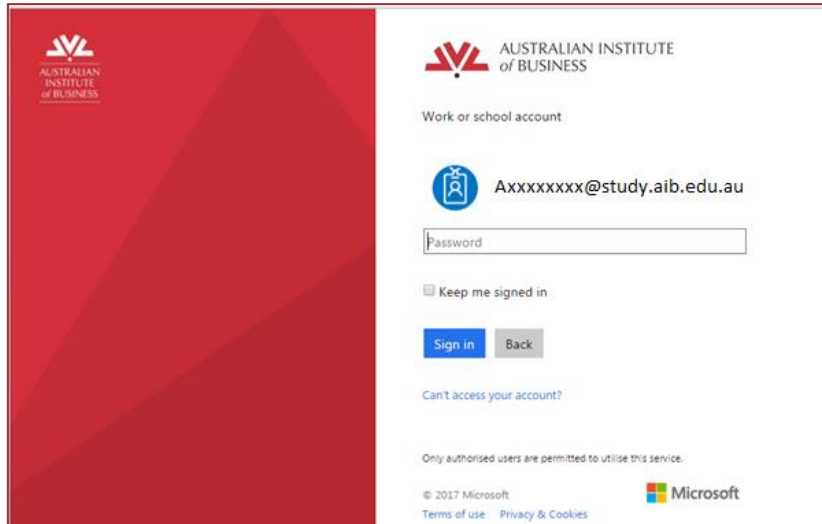
Lynda.com Student User Guide

Logging into Lynda.com via the Student Learning Portal	2
Lynda.com mobile App Details:.....	6
iOS app for iPhone and iPad.....	6
Getting Support	8

Logging into Lynda.com via the Student Learning Portal

Step 1

You will need to login to the **AIB Student Learning Portal** and enter your username and password.



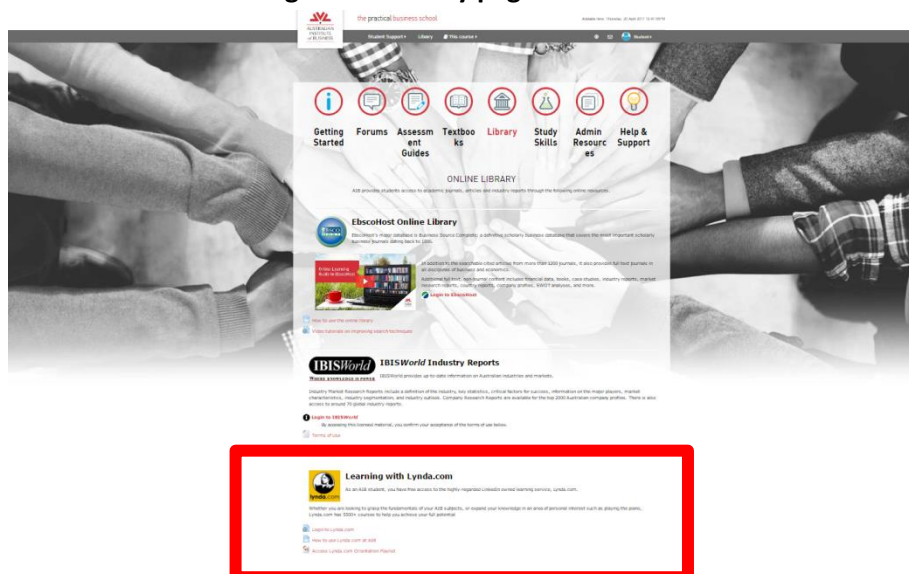
Step 2

Then navigate to the **library section** and scroll down until you find the section called **“Learning with Lynda.com”**. (Different Student Learning Portal versions might look slightly different).

You will see three links

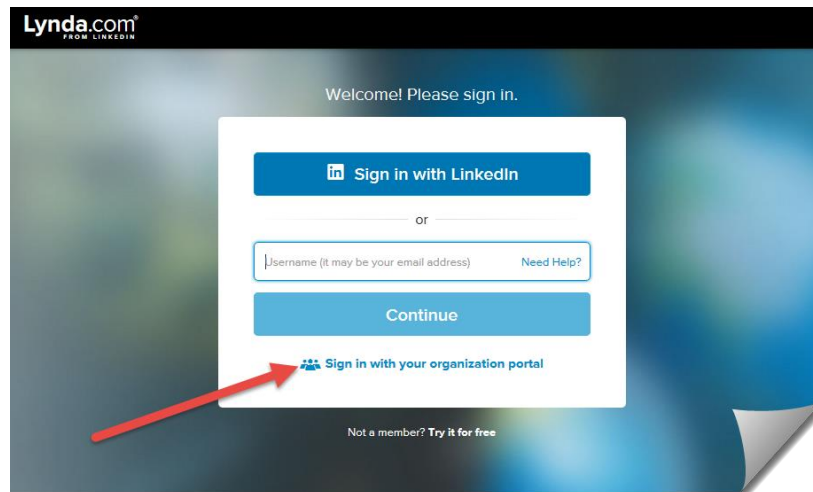
- To Login - click **‘Login to Lynda.com’**.
- For support - click **‘How to use Lynda.com at AIB’**.
- To access your first playlist - click **‘Access Lynda.com Orientation Playlist’**

Lynda.com via the Student Learning Portal Library page



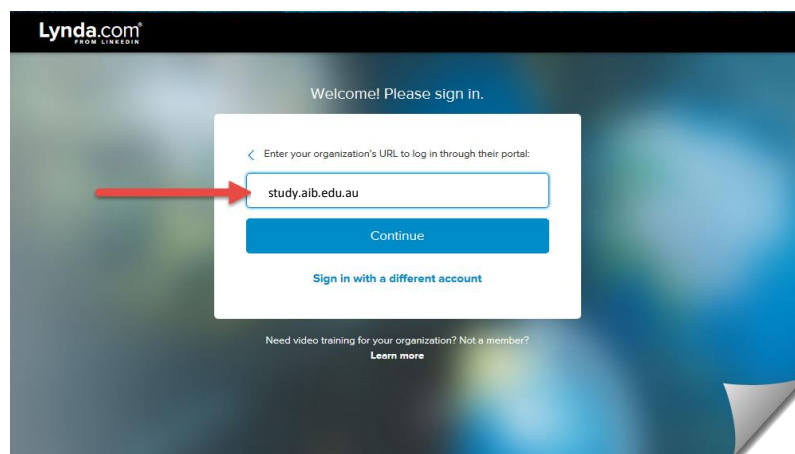
Step 3

Clicking 'Login to Lynda.com' in step 2, will bring you to the Lynda.com sign in page. Click, 'Sign in with your organization portal'.



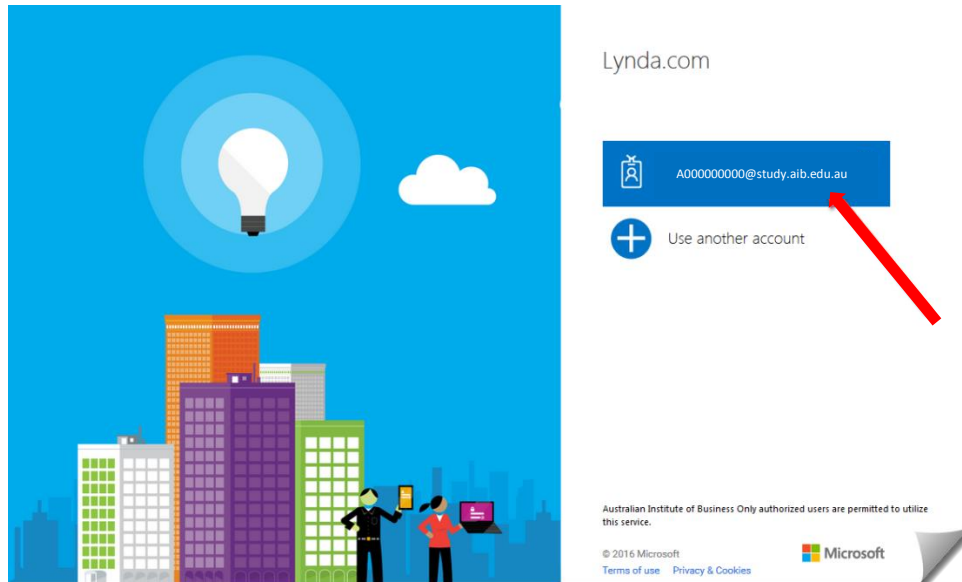
Step 4

On the next screen, type in **study.aib.edu.au** in the box and then click on **Continue**



Step 5

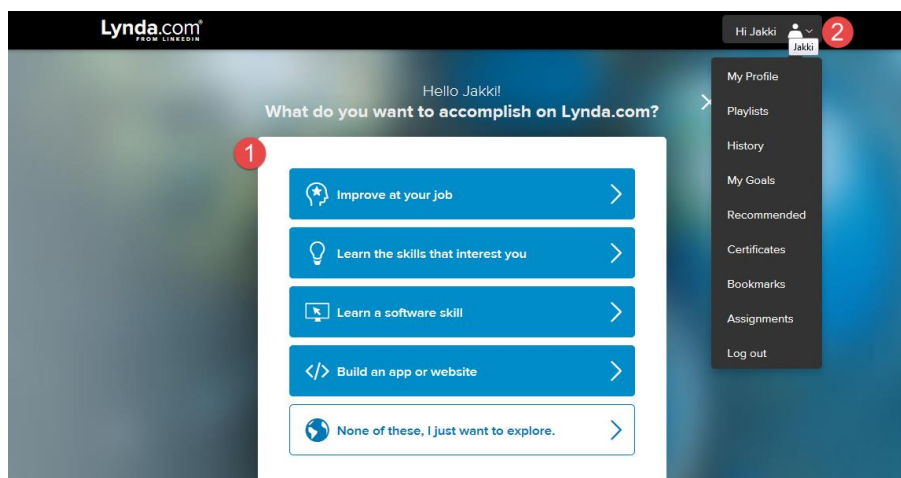
Click on your username and the next screen will appear where you will need to enter your **password** (the same one as you use to log into the Student Learning portal).



Step 6

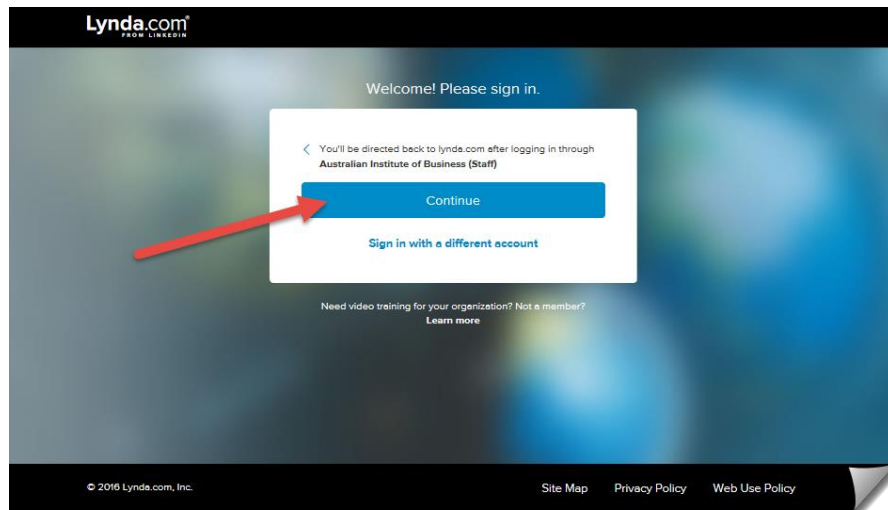
Welcome to your AIB Lynda.com home page!

You have many options on this screen. You can (1) start learning straight away OR (2) add to your profile, access Playlists assigned to you, look at the history of your learning, set some learning goals and more.



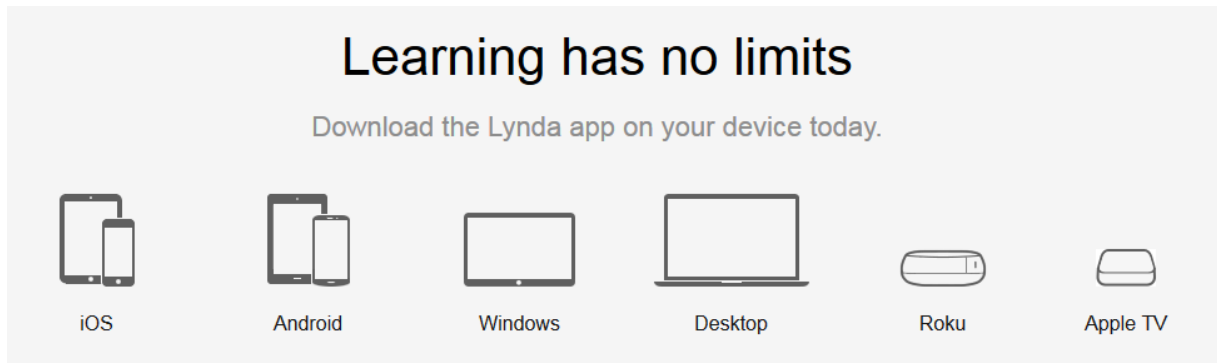
Step 7

Your browser should remember your login details next time you log back into the Student Learning Portal. Click on **Continue** to access your AIB Lynda.com profile.



Lynda.com mobile App Details:

The free Lynda.com Mobile app can be easily found in all app stores. You may download the app on an unlimited number of mobile devices.



Here are all the details <https://www.lynda.com/apps>

Important information to remember:

- Account management features are not supported on the mobile app.
- The app gives you unlimited access to all courses and allows you to browse by subject, software, and new courses.
- The app allows full-screen playback and provides both course and video titles for search results. You can also use pause, rewind and auto-play features when viewing courses.
- The following features are not available on the app: exercise files, transcripts, bookmarks, and closed captioning.

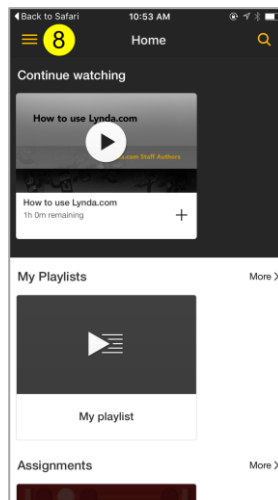
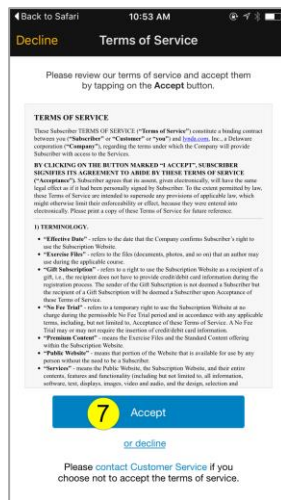
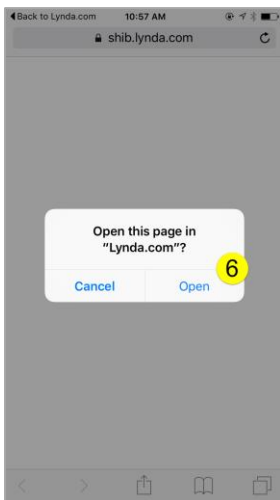
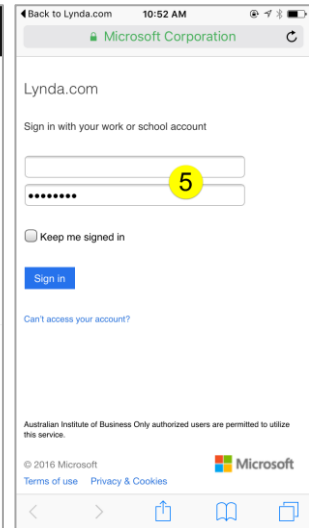
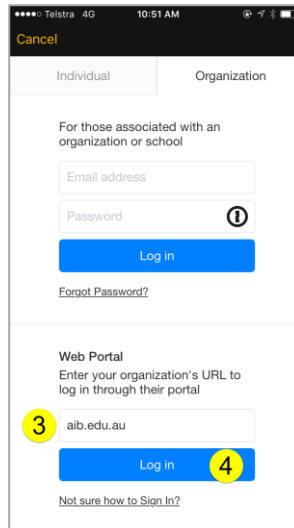
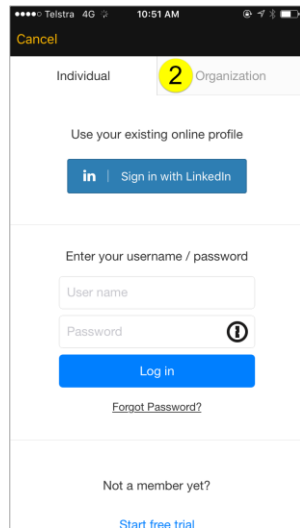
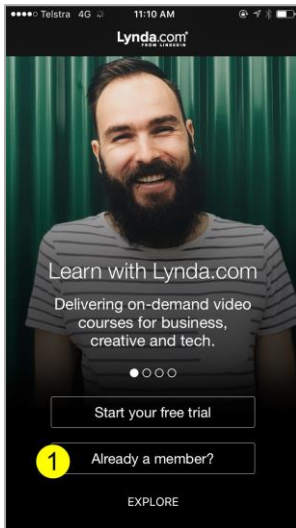
iOS app for iPhone and iPad

Download the Lynda.com app from the app store in iTunes



Once installed and opened:

1. Choose **Already a member?**
2. Click on **Organization**
3. Enter **aib.edu.au** as the **Web Portal**
4. Click on **Log in**
5. Use your **AIB Login** details to access the system and click on **Sign In**
6. Select **Open**
7. Select **Accept**
8. Here is your AIB Lynda.com profile! Clicking on the **'show more' bars** to access all your details

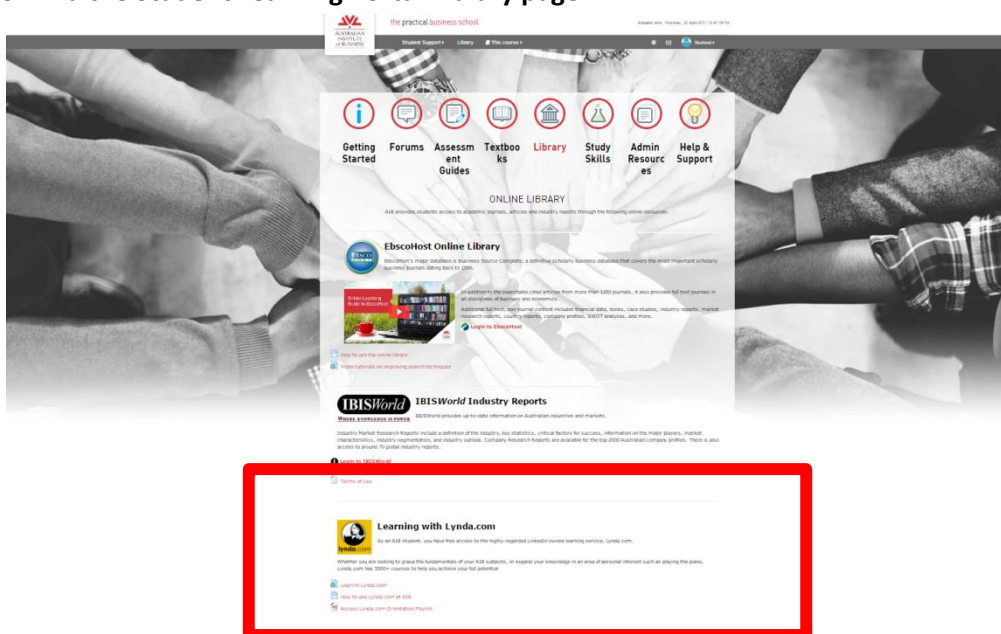


Getting Support

For more support, visit the library section in the Student Learning Portal. Navigate to the “Learning with Lynda.com” section and click “How to use Lynda.com at AIB”.

Here you will find all the support you need to use Lynda.com.

Lynda.com via the Student Learning Portal Library page



More support?

There is also a lot of information available on Lynda.com to help (on any page, scroll down to the bottom of the page and click on SUPPORT). It is highly recommended that you watch the first 10 minutes of the video on this page which will give you an overview of the site – very helpful indeed!

<https://www.lynda.com/Business-tutorials/How-use-Lynda-com/77683-2.html>

